



Welcome to the 2014 Kettle of Fish Ale! Here is our schedule of activities:

**Saturday, October 11:**

6:00 – 10:00 pm: Meet and greet at 22 Clifton St, Belmont MA

**Sunday, October 12:**

- 10:00 – 11:00 am: Dance at Salem Willows
- 11:30 am – 1:00 pm: Lunch at Murphy's Pub, 300 Derby St, Salem MA
- 1:30 – 3:00 pm: Dance at Salem Common
- 3:30 – 5:00 pm: Dance at Derby Wharf / Salem Maritime National Historic Site
- 5:30 – ??: Dinner at 8 Little Nahant Rd, Nahant MA

**Monday, October 13:**

- 11:00 am – noon: Dance at Cambridge Common, Cambridge MA
- Noon – ??: Lunch somewhere near Cambridge Common
- Afternoon: possible second dance stand, TBA

**The teams:**

- Red Herring Morris – Belmont MA – your hosts!
- The Ladies of the Rolling Pin – Providence RI
- A Sworded Affair – Burlington VT
- No Apologies Rapper – Boston MA area

# Saturday

The meet and greet and dinner is from 6 to 10 pm in Belmont MA. Here is how to get there (map on next page).

From most places: get to the intersection of Route 128 / I-95 and Route 2. Suggested routes:

From the west: take the Mass Pike to Route 128 / I-95 north. Take 128 north to Route 2 east.

From Vermont: take I-89 south to I-93 south. Take I-93 south to Route 128 / I-95 south. Take Route 128 south to Route 2 east.

From the south: Take I-95 north. At the intersection of I-95 with Route 128 and I-93, stay on Route 128 / I-95 north. Take 128 north to Route 2 east.

From places in and near Boston: get to the intersection of Route 2 with Route 60 / Pleasant St. Then follow the final two steps below.

Drive 5.8 miles, 7 min

## Concord Turnpike & Interstate 95

Lexington, MA 02421

Merge onto MA-2 E  
4.3 mi

Take exit 59 toward Massachusetts 60/Belmont/Arlington  
0.2 mi

Merge onto Radcliffe Rd  
0.2 mi

Continue straight onto Lake St  
0.1 mi

Turn right onto Pleasant St  
0.6 mi

Turn right onto Clifton St  
397 ft

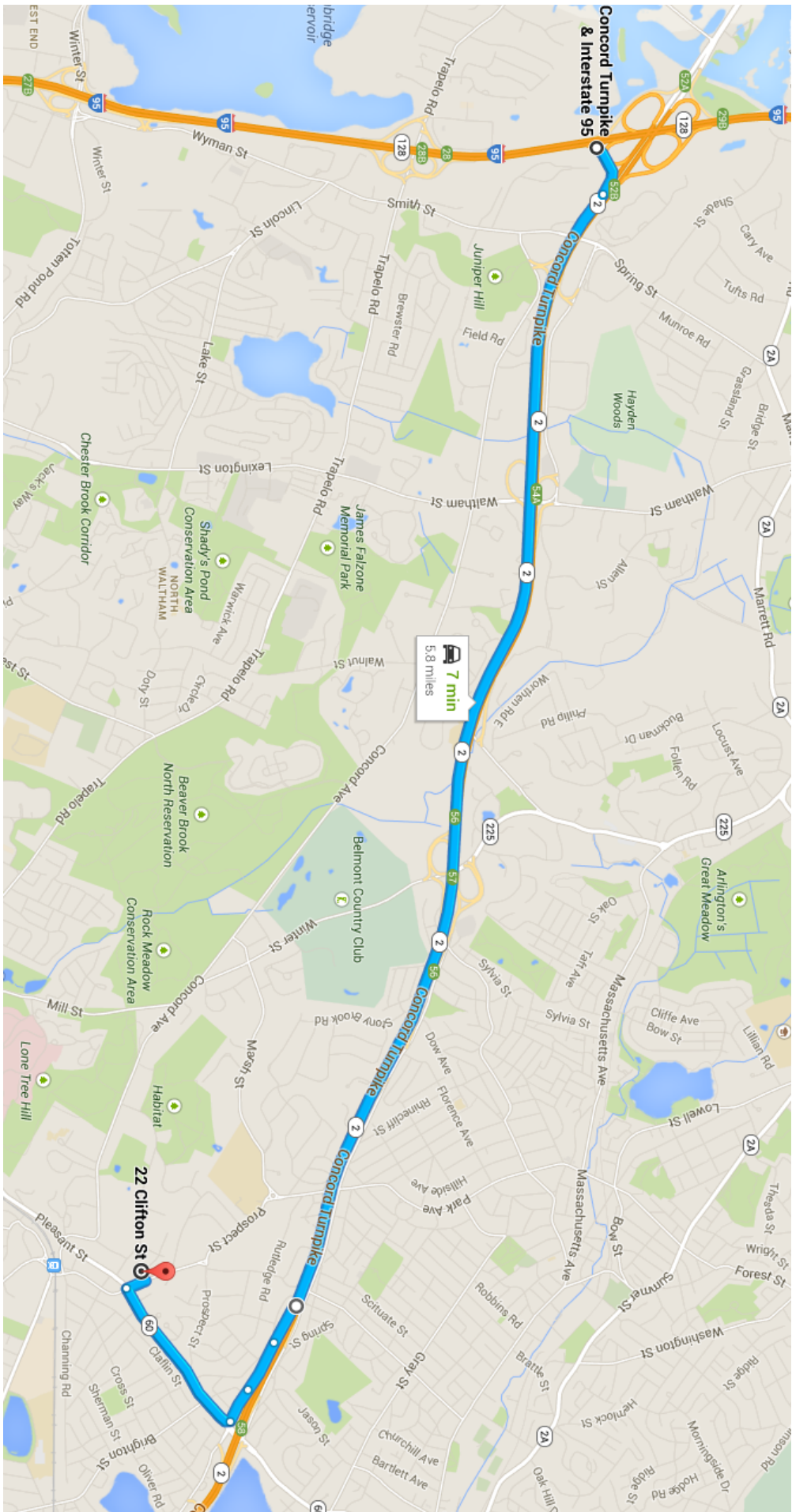
## 22 Clifton St

Belmont, MA 02478

In past years we have directed people to park on a nearby street rather than at 22 Clifton Street. We will have a smaller number on Saturday night this year so we believe everybody will be able to park at the house.

If you get Google Maps or GPS instructions to 22 Clifton St, they will have you get off Route 2 an exit earlier. (We put an extra route point into Google Maps to get the route shown here.) That route is slightly shorter but more confusing to follow, so we suggest not going that way unless you are familiar with the area.

Locals coming by MBTA: take the 74, 75, or 72/75 bus from Harvard Square. (All three routes have the same end point, so take whichever one shows up first. These buses depart from the upper bus level at Harvard Square station.) Ride all the way to the end, getting off near the intersection of Alexander Ave and Leonard St, where Macy's used to be. Walk to the end of the block (continuing in the direction the bus was going), cross the street, and turn right on Leonard St. Continue to the traffic light and then continue straight ahead on Clifton St. #22 will be on the left near a fire hydrant.



## Sunday

Our first dance stand is at Salem Willows. After that we will be in downtown Salem for the rest of the day. How to get to Salem (see the map on the next page):

Start by getting to the intersection of I-95 and Route 128 in Peabody. Suggested routes:

From the west: Take the Mass Pike to the intersection of the Pike and Route 128 / I-95. Get on I-95 north.

From Vermont: Take I-89 south to I-93 south. Take I-93 south to the intersection with Route 128 / I-95. Get on I-95 north.

From the south: Take I-95 north to the junction with I-93 and Route 128. Continue onto Route 128 / I-95 north.

From Boston and nearby towns: Take I-93 north to Route 128 / I-95 north. Get on I-95 north.

Eventually you reach the point in Peabody where I-95 and Route 128 part ways. Continue straight on Route 128, avoiding the right fork onto I-95. From there:

Drive 6.9 miles, 15 min

Follow MA-128 N to Lowell St. Take exit 26 from MA-128 N

1.9 mi / 2 min

Continue on Lowell St. Take Bridge St to Fort Ave in Salem

4.9 mi / 13 min

Turn right onto Lowell St

1.3 mi

Continue onto Main St

0.4 mi

Continue onto Boston St

0.6 mi

Turn left onto Bridge St / Route 107

1.0 mi

Turn right to stay on Bridge St

0.3 mi

Turn right onto Webb St

0.4 mi

Slight left onto Fort Ave

Destination will be on the right

0.9 mi

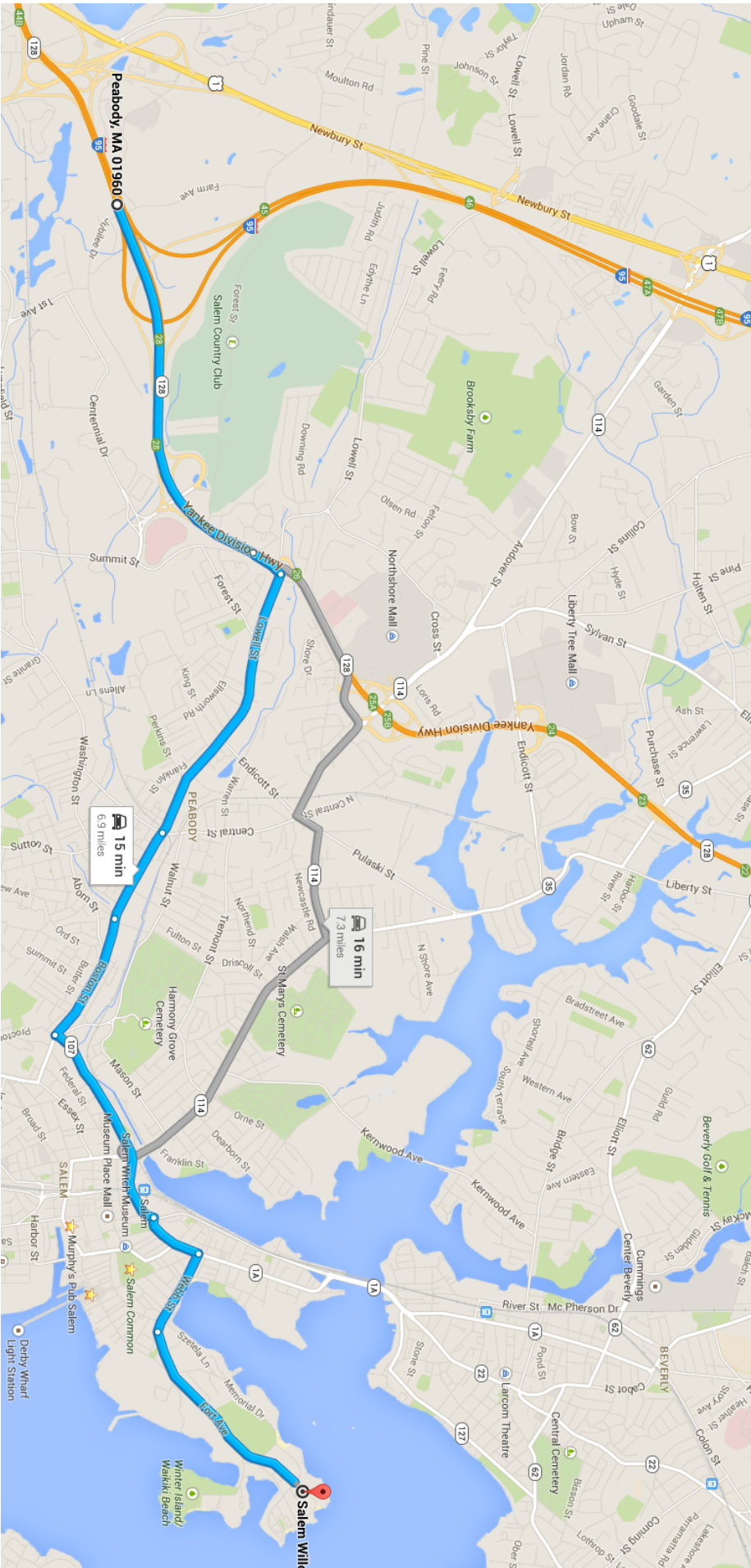
## Salem Willows

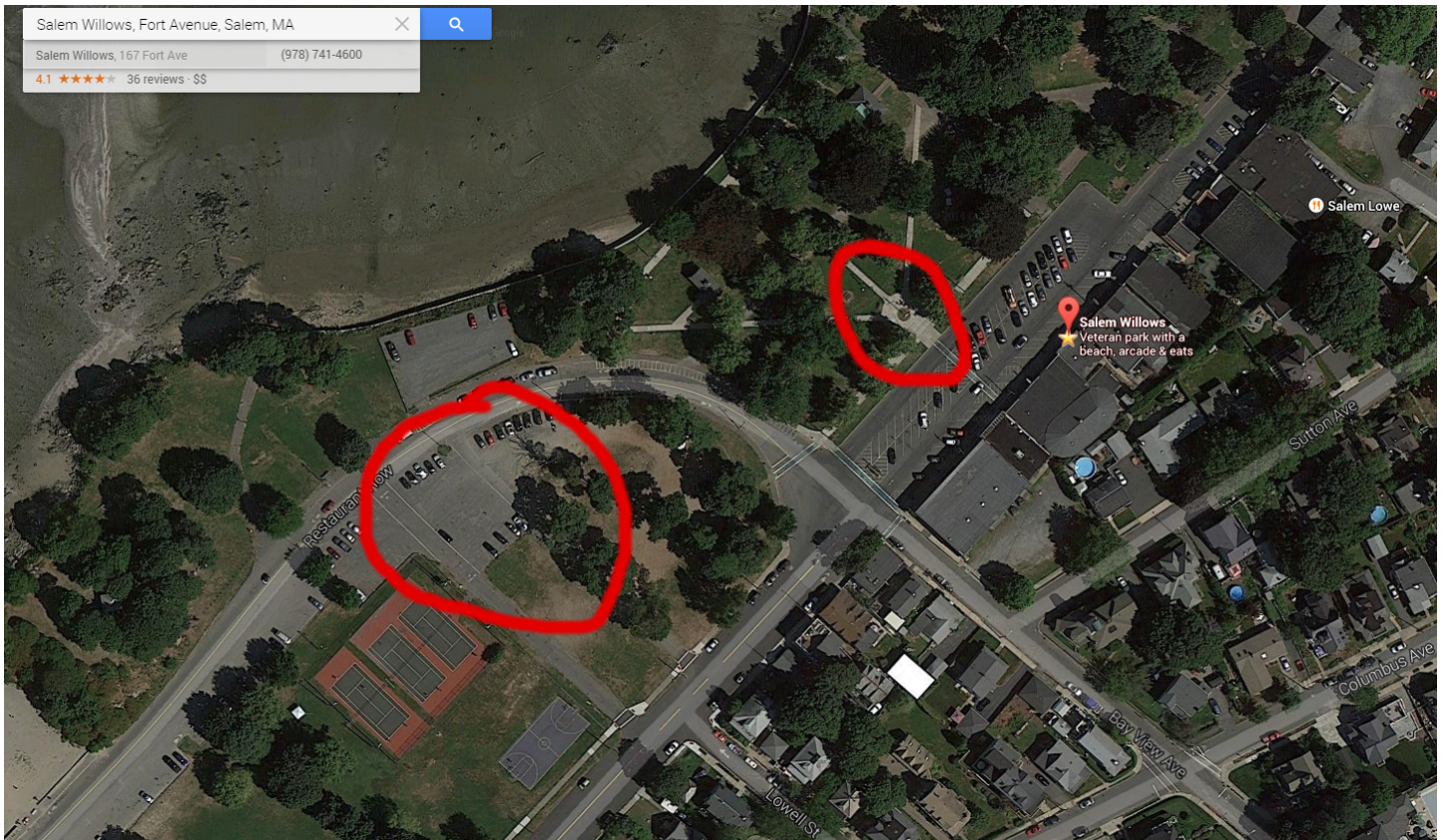
167 Fort Ave, Salem, MA 01970

If you are coming later in the day, missing Salem Willows:

Just after the junction with Route 114 (0.5 miles after turning onto Bridge St), turn right on Washington St. This takes you toward downtown Salem. See the parking map for our dance locations and parking areas.

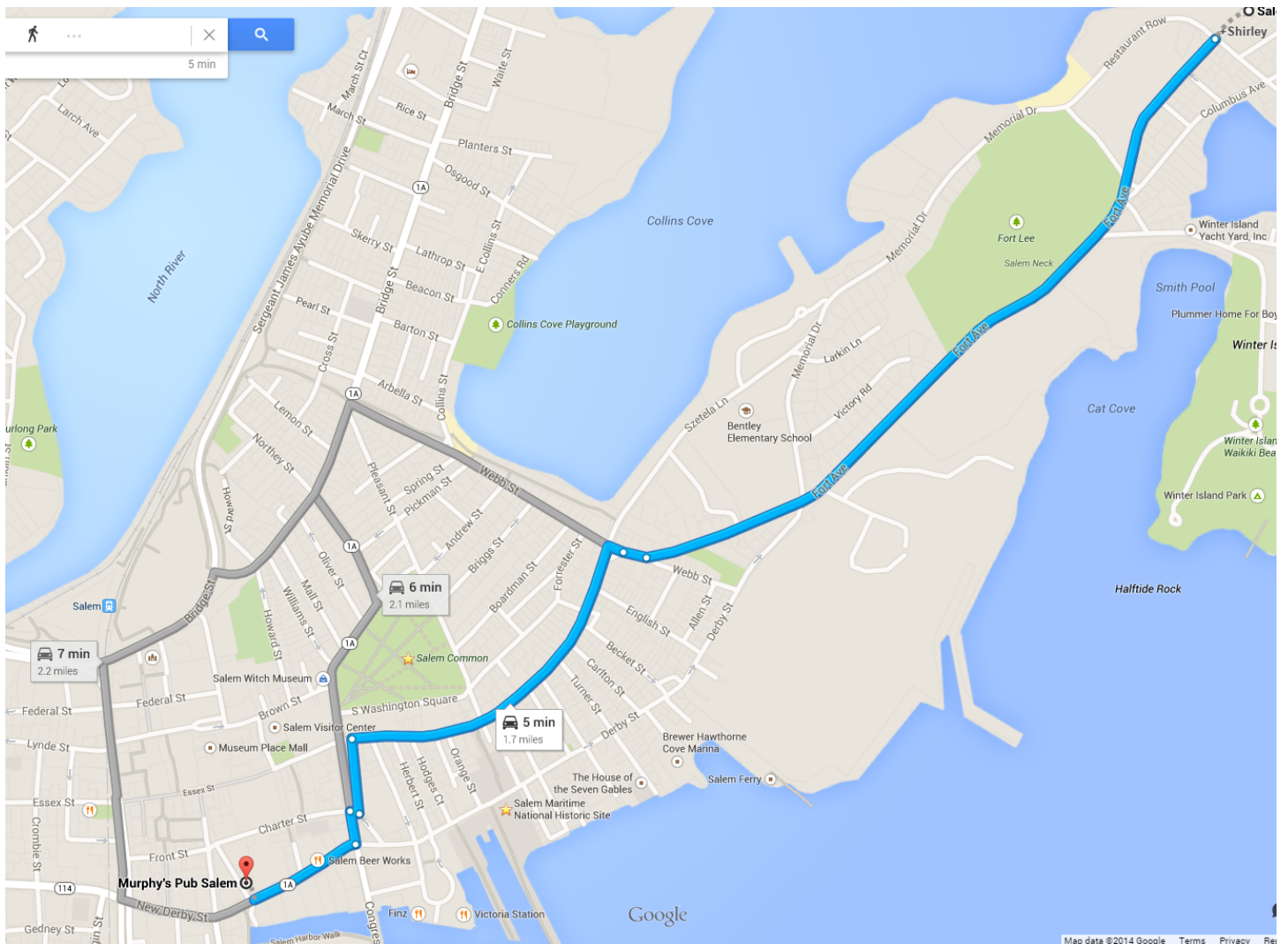
If you want to come to Salem Willows by T, you will need to talk to us and arrange a ride. If you just want to come to the later stands, take the commuter rail from North Station to Salem and walk from the station.





Our first stand is at Salem Willows; we will be dancing there from 10 to 11am. There is a parking area with meters near the arcade, and a free parking area on the left (marked with the leftmost of the two red circles in the Google Earth view) just before you get to the arcade. Our gathering point for dancing is across the street from the arcade; there is a small plaza where paths converge, marked with the rightmost of the red circles. We will dance near there.

After that, we go to downtown Salem for the rest of the day. Unless you have limited mobility, we recommend that you park once and walk to the pub and the dance stands; the walks are short.



Driving from Salem Willows to downtown Salem. (You can't take the seemingly obvious route of following Derby St because it's one way in the wrong direction.)

Drive 1.7 miles, 5 min

Head southwest on Fort Ave toward Lowell St  
0.9 mi

Slight right onto Webb St  
151 ft

Turn left onto Essex St  
0.4 mi

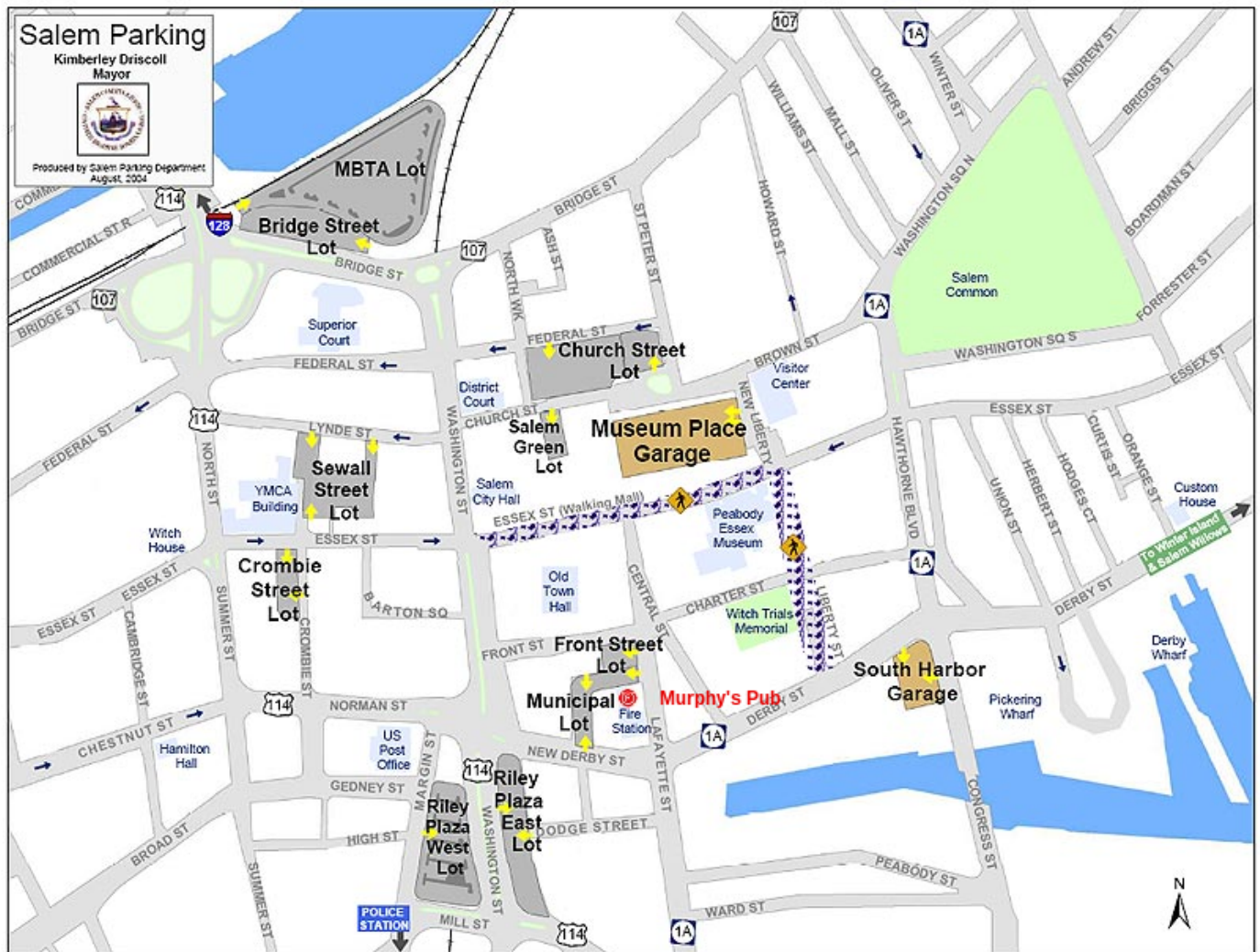
Turn left onto Hawthorne Blvd  
469 ft

Take the 1<sup>st</sup> right to stay on Hawthorne Blvd  
56 ft

Turn left to stay on Hawthorne Blvd  
207 ft

Take the 1<sup>st</sup> right onto Derby St

## Parking Map



This is the parking map from the City of Salem web site. You can see the three locations that we will be using in the downtown area: the lunch stop at Murphy's Pub (corner of Central St and Derby St), the first dance stop at Salem Common, and the final dance stop at Derby Wharf.

The most centrally located parking area for our ale is the South Harbor Garage / Waterfront Garage. Normally parking there would be inexpensive (25 cents per hour), but during October they charge a flat \$20 rate on weekends regardless of length of stay. The Church Street lot is also charging the \$20 rate. The Museum Place Garage is normally 75 cents per hour, but will apparently also be charging \$20.

Metered street parking is free on Sunday. It is likely to be difficult to find. The smaller lots (the ones other than Church St) are metered and free on Sunday. If you want to try to find a street space, the best bets are around the Common or on Derby St near the wharf; the streets in the core area of downtown are congested and the spaces will probably be filled.

The MBTA parking area is closed for construction. The new garage is nearly completed but has not yet opened; it is currently scheduled to open two weeks after our ale.



## **In downtown Salem:**

Our first stop is lunch at Murphy's Pub, 300 Derby St, at the corner of Derby St and Central St. Find a place to park, then use the map to figure out how to get to the pub.

Our first dance stand after lunch is at Salem Common. To get to the Common:

Turn left on Derby St when you exit the pub.

Turn left at the second street (the first large one), Hawthorne Blvd.

Cross Hawthorne Blvd and walk three blocks. You will see a park on your right; that's Salem Common.

Our final dance stand is at Derby Wharf. To get from the Common to the Wharf:

Get back to Hawthorne St. Turn left.

Walk three blocks. Cross Derby St at the light and turn left (toward the water, away from the pub).

You will walk past a small retail area on the right with a U-shaped road that goes around it. Shortly after that, Derby Wharf and the Historic Site are on the right.

After dancing, return to your car. Turn left on Derby St to go back toward downtown. After that, follow the map to get to where you parked. From there, we will proceed to Nahant for dinner.

# Driving to Nahant from Salem

**Drive 7.4 miles, 18 min**

## Murphy's Pub Salem

300 Derby St, Salem, MA 01970

Take Lafayette St, MA-1A S, Lynn Shore Dr and Nahant Rd to Little Nahant Rd in Nahant

7.3 mi / 17 min

Head southwest on Derby St toward Central St  
272 ft

Turn left onto Lafayette St  
1.0 mi

Turn right onto MA-1A S/Loring Ave

Continue to follow MA-1A S  
3.4 mi

Turn left onto Eastern Ave  
472 ft

Continue onto Ocean St  
187 ft

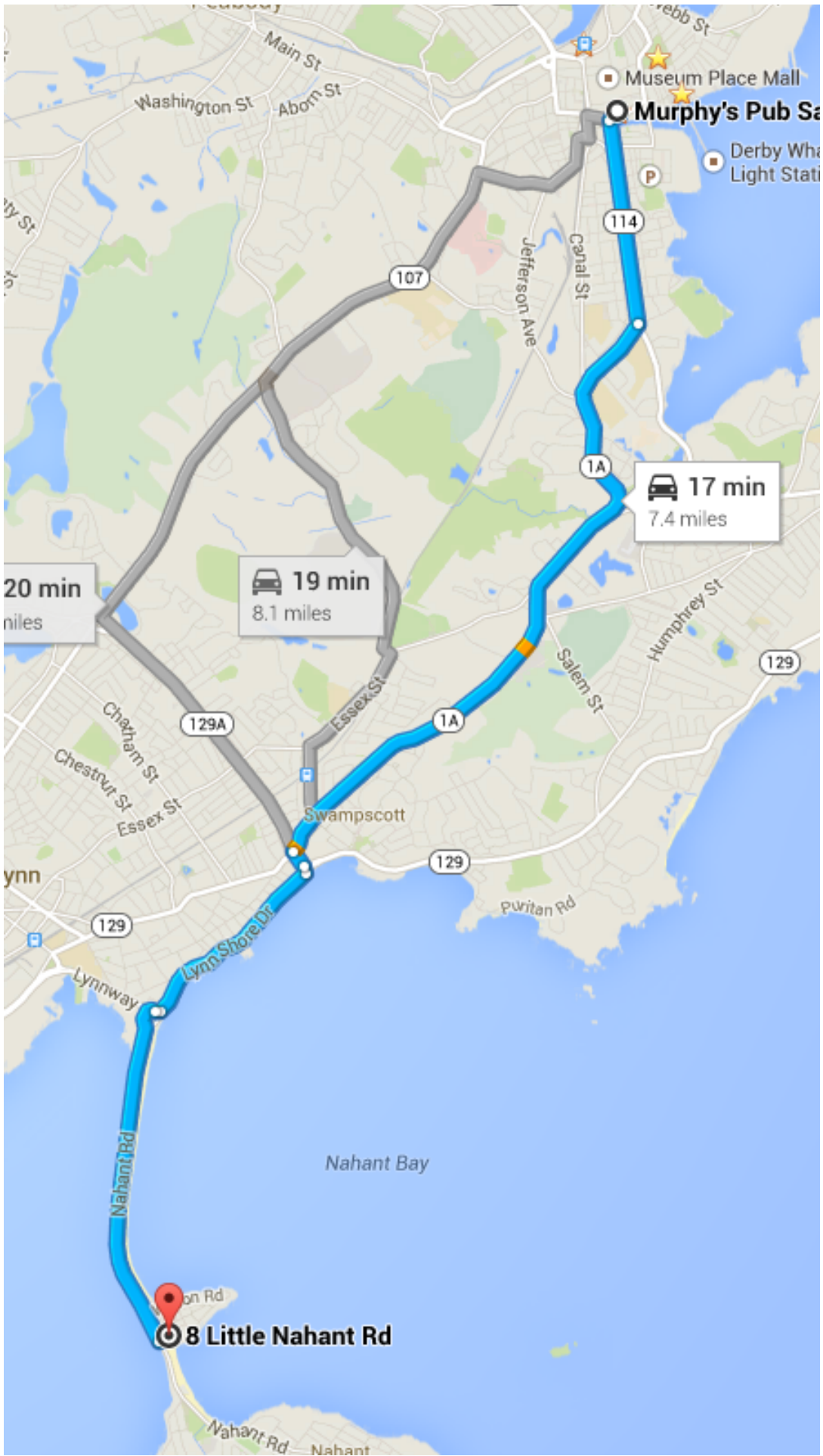
Turn right onto Lynn Shore Dr  
1.0 mi

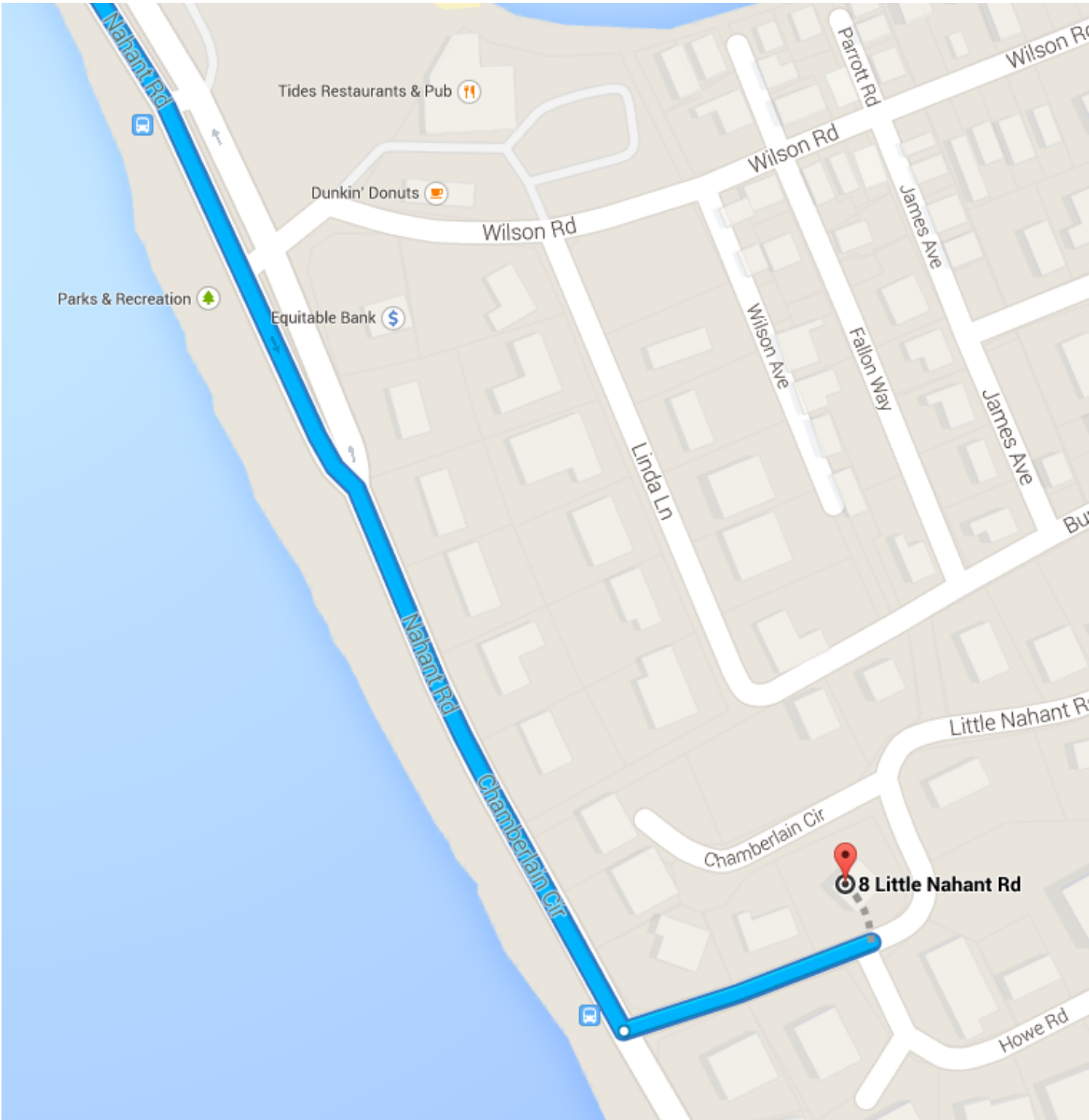
Continue onto Lynnway  
128 ft

At the traffic circle, take the 2<sup>nd</sup> exit (going about 270 degrees around) onto Nahant Rd  
1.7 mi

Lafayette St is a block west (away from the water) from Murphy's Pub.

The Google Maps directions fail to indicate what to do at the end. After you cross the causeway, take the second left turn (the first one after you pass the bank and the street stops being divided). Go up the steep hill, following the curve left. Then take the first left turn onto Chamberlain Circle and park along that dead end street. (We usually park on the left side, the one closer to the house.)





## Getting home from Nahant

There are two basic ways to get out, depending on where you are going.

If you are going to the north or northwest, you are taking route 129 west to I-95 / Route 128. Detailed steps:

8.0 mi / 18 min

Continue to follow Nahant Rd

1.6 mi

At the traffic circle, take the 2<sup>nd</sup> exit onto Lynnway

0.6 mi

Turn right onto Market St

0.1 mi

Continue straight to stay on Market St

0.2 mi

Turn right onto Liberty St

0.1 mi

Turn left onto Washington St

0.7 mi

Washington St turns right and becomes Boston St

0.7 mi

Boston St turns left and becomes Broadway

0.4 mi

Continue onto MA-129 W/Lynnfield St

Continue to follow MA-129 W

2.7 mi

At the traffic circle, take the 2<sup>nd</sup> exit onto the I-95/US-1 ramp to Portsmouth NH/Waltham

0.3 mi

Keep left at the fork, follow signs for Interstate 95 S/Waltham and merge onto I-95 S

If you are going to the west or south, you are taking Route 1A south to I-90 west. From there, to go south exit onto I-93 south, stay right at the Braintree split to stay on I-93 south, then take I-95 south. There is a toll for the Ted Williams Tunnel; bring your E-ZPass if you have one. Detailed steps:

9.8 mi / 19 min

Continue to follow Nahant Rd

1.6 mi

At the traffic circle, take the 2<sup>nd</sup> exit onto Lynnway

2.4 mi

Continue onto N Shore Rd

2.5 mi

At the traffic circle, take the 1<sup>st</sup> exit onto VFW Pkwy

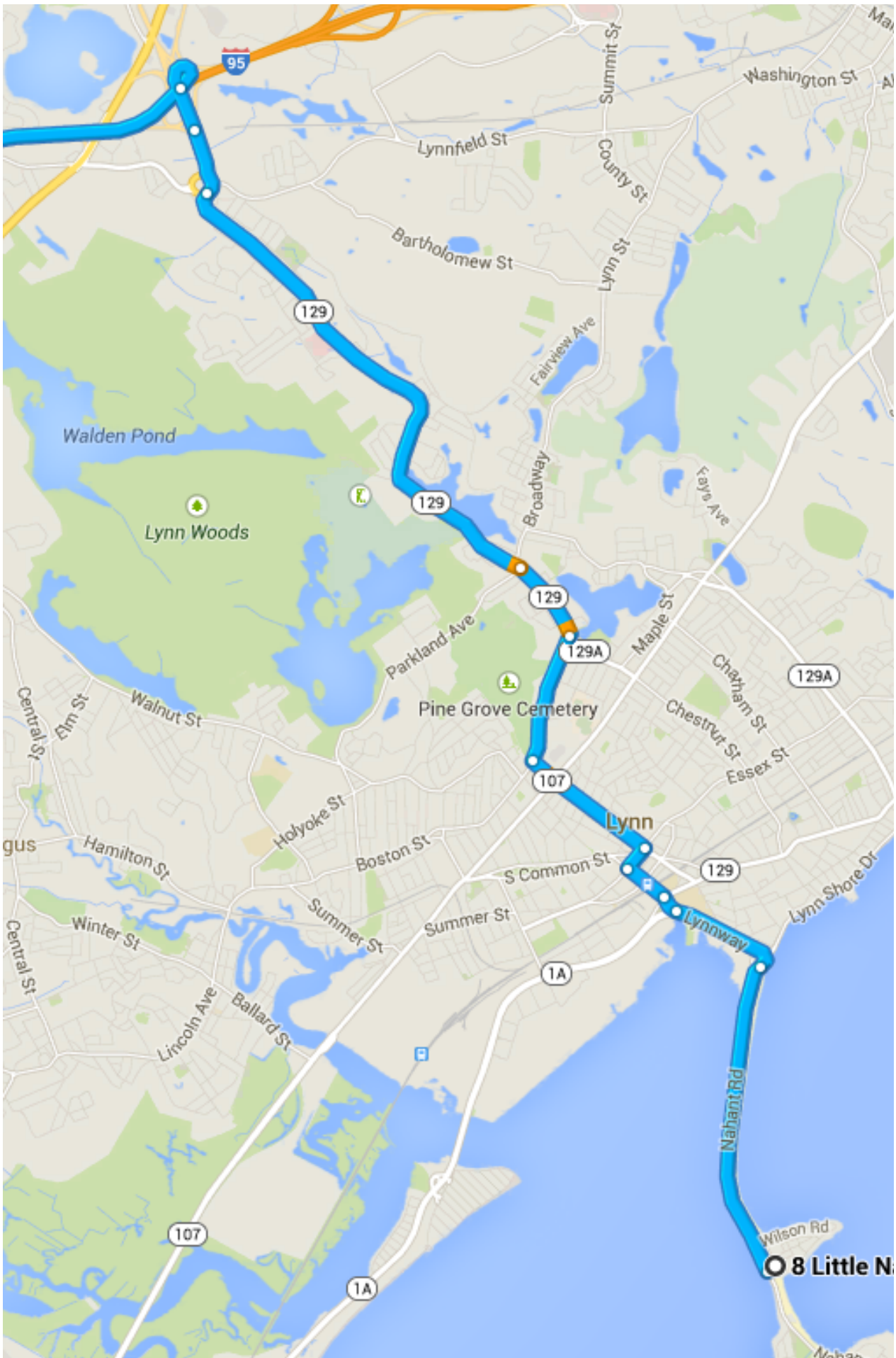
0.5 mi

Slight left at Beach St

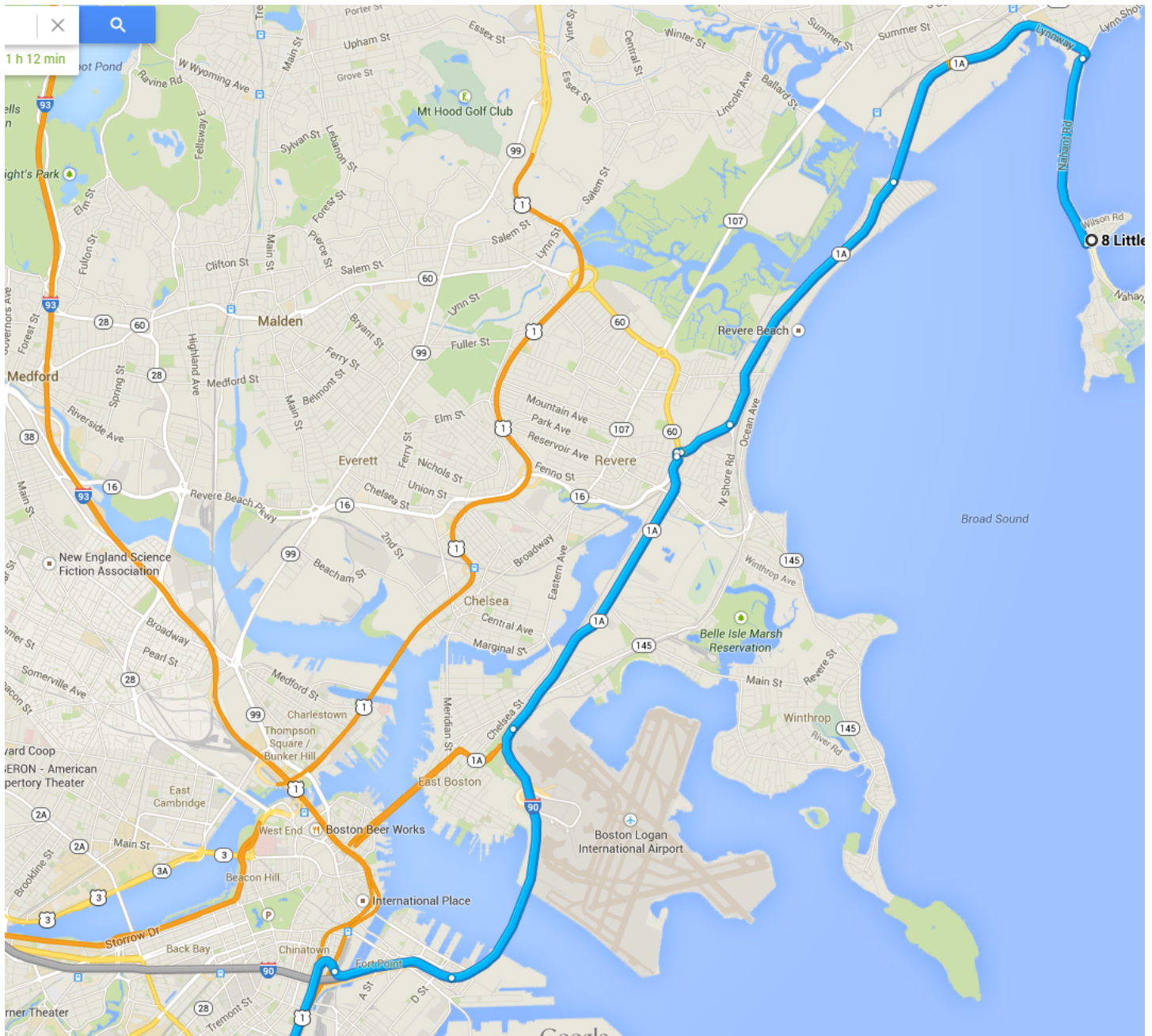
180 ft

Keep left to continue toward MA-16 W/MA-1A S/State Hwy 1A S

164 ft



8 Little N



## **Monday**

Everybody who is dancing on Monday will be staying with one or more members of Red Herring. We will provide directions to you at that time.

The current plan is to gather at Cambridge Common at 11 am and dance there. This is subject to change.