

Car Park and Garden

Style: Duns Tew (Cotswold) **Tune:** *The Gallant Hussar* **Type:** corner/bagged hankies **Dancers:** 6 (can be modified for 4) **Stepping:** Duns Tew double-step, hockle-back, foot-together-jump **Source:** Jocelyn Reynolds via Rebecca Jordan **Chorus:** whole hey¹ **Sequence:** once to yourself, rounds/double steps, chorus, rounds/double capers, chorus, rounds/uprights, chorus, rounds/double steps & all-in

- [dances:duns-tew:1_the_gallant_hussar.abc](#)
- [dances:duns-tew:1_the_gallant_hussar.mid](#)
- [dances:duns-tew:1_the_gallant_hussar.pdf](#)

The Gallant Hussar (Car Park and Garden)

Traditional

A(AB)2(AC)2A

♩. = 76

A



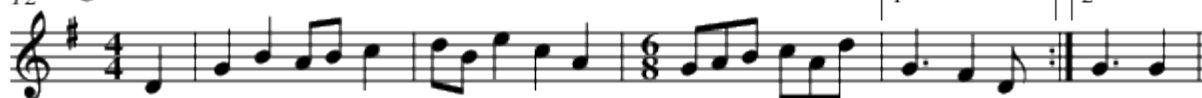
4 B



9



12 C



```
X:1
T:The Gallant Hussar
T:(Car Park and Garden)
M:6/8
L:1/8
C:Traditional
S:Bacon (MDT)
N:C rearranged
R:Jig
%P:A(AB)$^2$(AC)$^2$A
P:A(AB)2(AC)2A
```

```
K:G
Q:C3=76
V:1      clef=treble
%%MIDI channel 1
%%MIDI control 7 100      % volume = 100
%%MIDI program 41      % General MIDI violin
%%MIDI transpose 0
%%MIDI gchordoff
P:A
D          | G2 B ABc | dBe c2 A | GAB cAd |1 G3 F2 \
D          :|2 G3 G2 ||
P:B
|: B/2c/2 \
%%setbarnb 5
| dBd g2 g | ecA c2 B | ABc dBA | G3 F2 D |
G2 B ABc | dBe c2 A | GAB cAd | G3 G2 :|
P:C
M:4/4
D2 \
%%setbarnb 13
| G2 B2 AB c2 | dB e2 c2 A2 | \
M:6/8
GAB cAd |1 G3 F2 D :|2 G3 G2 |]
```

¹⁾

technically, it's two half heys because Duns Tew doesn't have a whole hey

From:
<https://redherringmorris.com/DokuWiki/> - **Red Herring Morris Wiki**

Permanent link:
<https://redherringmorris.com/DokuWiki/doku.php?id=dances:duns-tew:car-park-and-garden>

Last update: **2008/02/21 15:34**

